

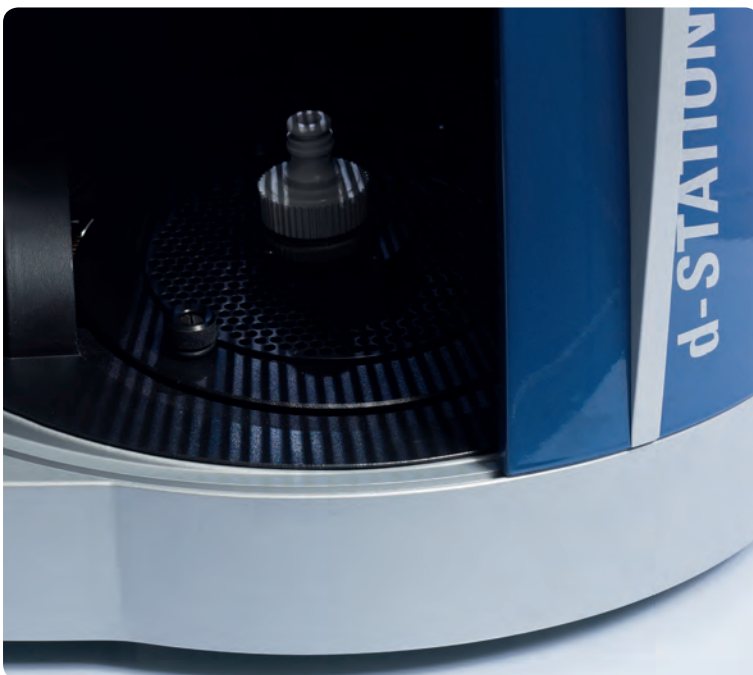


d-STATION

Automated 3D Digitization of Small Objects

Breuckmann scanning systems are among the first choice when it comes to the precise, reliable and fast three-dimensional capturing of models for the production of individual, precisely fitting dental constructions such as crowns, bridges, inlays or onlays. With over 1000 systems in operation worldwide, we are a renowned and experienced partner in the field of dental CAD/CAM applications.

Thanks to the tested and proven miniaturized projection technique, the d-STATION provides the high-resolution acquisition of 3D data which characterizes all breuckmann systems. With its new, sleek and modern design combined with sophisticated, state-of-the-art digitization technology, the system offers the optimal solution with regard to cost-benefit ratio.



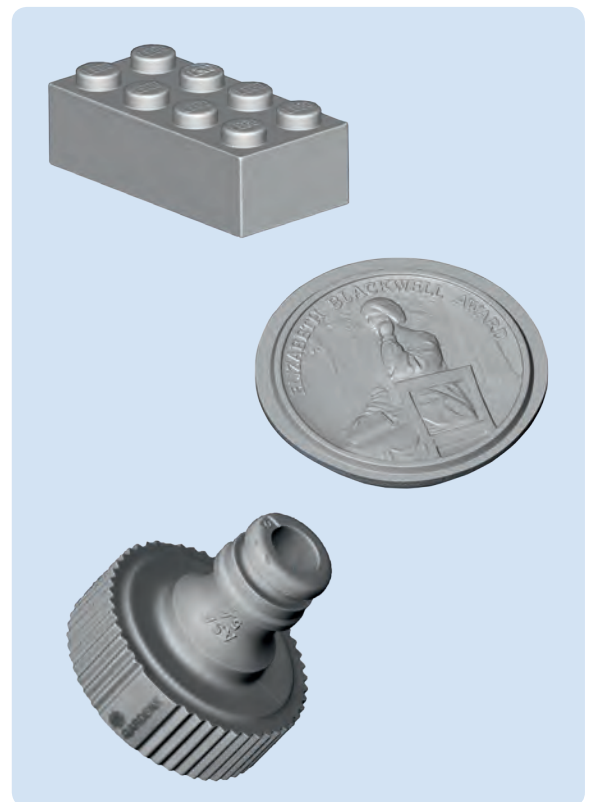
—• The d-STATION's protected system concept

Following its considerable success, the d-STATION has also been adapted and optimized for applications reaching far beyond its original dental technology focus, reaching all the way to the automated digitization of all types of small objects. Further applications are increasingly found in the scientific, medical and technical area as well as in a range of small scale consumer goods.



—• The compact system housing of the d-STATION

The integrated concept of object positioning and 3D scanning hardware assembled in a closed system housing ensures failure-free working protected from environmental interferences such as vibration, light, dust etc. This guarantees easy, error-free handling with high-quality results.



—• d-STATION: Automated digitization of any types of small objects

VERSATILE APPLICATION AREAS

- ✓ Dental preparation models, impressions and structures for implant technology
- ✓ Analysis of masticatory surfaces
- ✓ Ear impressions
- ✓ Plastic parts, toys
- ✓ Jewellery and gemstones
- ✓ Coins or archaeological finds
- ✓ Small-scale articles of any kind, up to a maximum weight of 2 kg



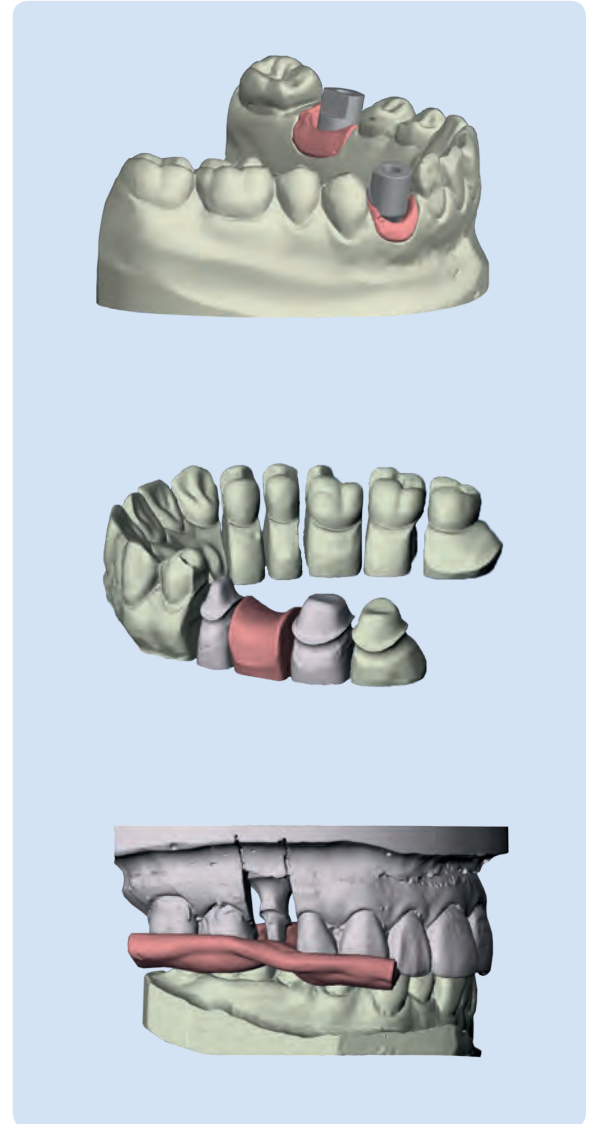
—> Flexible fixing tools for the d-STATION

High-Performance Features

- Breuckmann-patented miniature projection technique (MPT)
- Low-maintenance and economical thanks to robust construction and protected sensor hardware
- Compact and modern design
- Insusceptible to thermal influence by employing use of long-life LED technology
- Convenient adjustment of scanning objects with flexible fixing tools
- Freely positionable double axis turn-/ tilt unit for acquisition of complex object geometries
- Use of high-precision calibration plates
- Certifiable in compliance with VDI/VDE 2634

Software Features

- Automatic referencing of the positioning unit
- Intuitive, user-friendly software interface
- Optimal alignment by using best-fit approximation
- Fully automated scanning process, controllable by individual project templates
- Efficient scanning at a high level of detail and accuracy
- Open STL format for data processing with third-party CAD software or inspection programs



—> High-precision 3D data for dental technology

breuckmann
3D Scanner

Breuckmann GmbH
Torenstraße 14 | 88709 Meersburg, Germany
tel. +49 (0)7532 43 46 0
info@breuckmann.com | www.breuckmann.com